

GASTRONORM REFRIGERATING COUNTERS

Made entirely of stainless steel AISI304 / Wr.Nr. 1.4301.

Exterior entirely ground (Korn 320), interior entirely matt.

Interior full rounded (R=10mm), including corner bullets.

Insulation made of foaming polyurethane, thickness 50mm. The counter bottom is deepened.

Gastronorm refrigerating tables are designed for storing food in professional kitchens. They can accommodate different GN containers or gridles up to size GN 1/1.

Refrigerating tables are made in three different heights; 510mm, 710mm and 760mm.

REFRIGERATING SYSTEM

Plug-in version with integrated compressor unit or version prepared for connection on remote compressor unit or central refrigerating system.

Installation compartment can be mounted on the refrigerating table left or right side.

Evaporator with radial fan is made entirely of stainless steel AISI316 and is closed in a casing made of stainless steel AISI304.

Refrigerating counter operating range is -2°C to +8°C.

Freezing counter operating range is -18°C to -22°C.

As an option, a filter is installed in front of the condensor unit (only with plug-in version), to prevent build-up of impurities in the aggregate unit.

REFRIGERATING BASINS AND SALABETS

In the worktops above the refrigerating counters, a stainless steel frame with deepening for GN containers can be welded-in or mounted, with an insulated cover, in different variants and capacities. As an extra, an uninsulated basin made of stainless steel can be installed under the SS frame for reasons of hygiene.

On customer request, directly above the refrigerating table or in it's near vicinity, insulated refrigerating basin can be installed in the worktop, intended for GN containers and fitted with a separate refrigerating system operating in static cooling mode.

DOORS AND CHESTS OF DRAWERS

Refrigerating tables may either be fitted with self-closing refrigerating doors or with double- and/or triple-refrigerating drawer sets in the gastro GN 1/1 size.

OTHER

Refrigerating tables are prepared for mounting on adjustable legs, castors, fixed stainless steel base frame or concrete base (plinth).

TECHNICAL SPECIFICATIONS

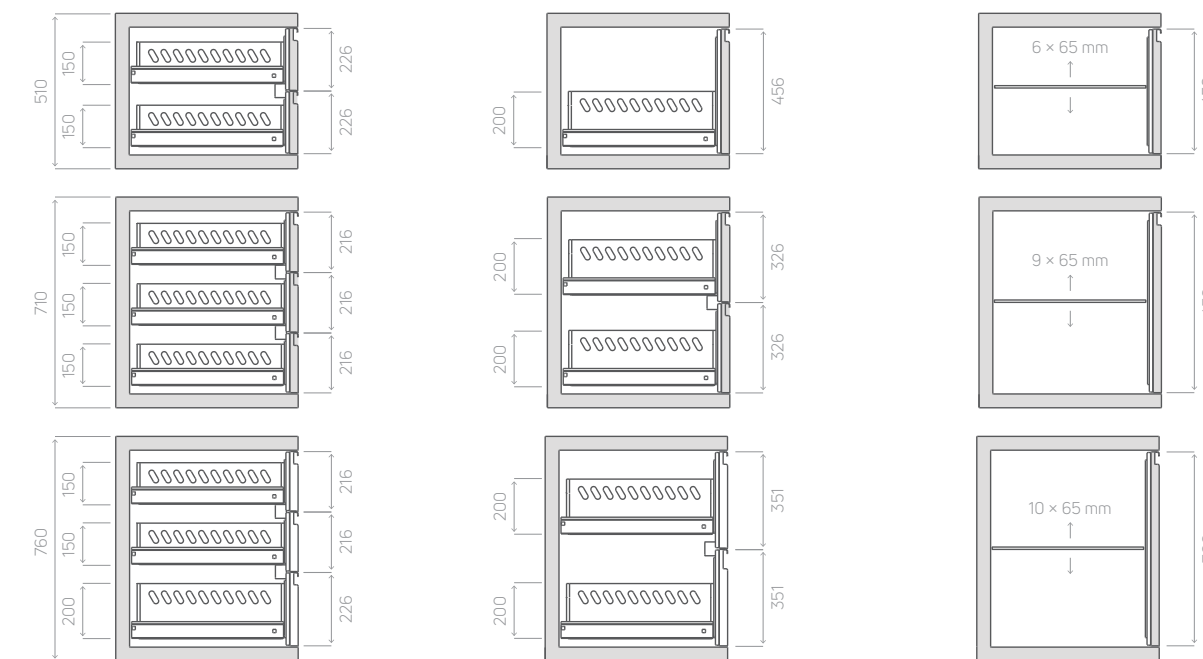
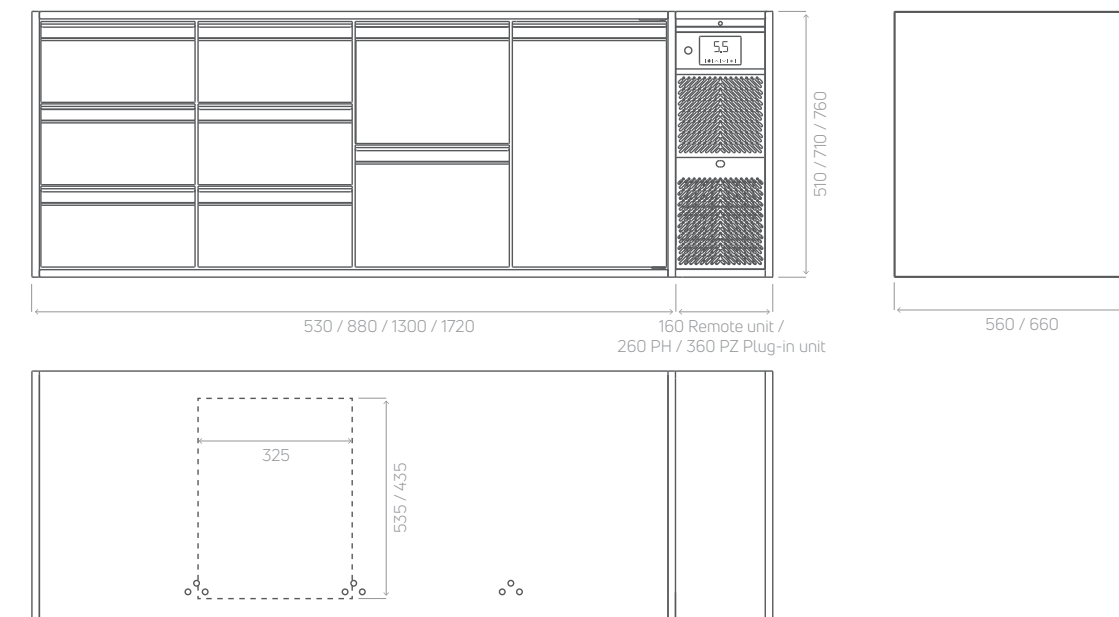
		PH 1* / PZ 1***	PH 2* / PZ 2***	PH 3* / PZ 3***	PH 4* / PZ 4***
Exterior dimensions / mm	Length	530	880	1300	1720
	Height	510 – 710 – 760			
	Depth	560 – 660			
Interior dimensions / mm	Length	430	780	1200	1620
	Height	610 – 660			
	Depth	460 – 560			
Aggregate dimensions / mm	Remote unit	+160			
	Plug-in unit - refrigerating mode	+260			
	Plug-in unit - freezing mode	+360			
Interior	AISI 304 / Wr.Nr. 1.4301 (Korn 320)				
Exterior	AISI 304 / Wr.Nr. 1.4301 (B2)				
Refrigerant	R134a	✓	✓	✓	✓
	R290	✓	✓	✓	✓
Temperature range	Cooling	- 2 do + 8 °C			
	Freezing	- 18 do - 22 °C			

PH* - Cooling counter PZ*** - Freezing counter

TECHNICAL SPECIFICATIONS

		PH 1* / PZ 1***	PH 2* / PZ 2***	PH 3* / PZ 3***	PH 4* / PZ 4***
Defrosting	Automatic hot gas defrost				
Electric power supply	230 V - 50 Hz				
Power consumption (24h)	Cooling counter PH*	3,22 kW	3,38 kW	4,1 kW	5,1 kW
	Freezing counter PZ***	8,8 kW	9,1 kW	13,5 kW	15 kW
Equipment	Doors GN 1/1	✓	✓	✓	✓
	2 drawers GN 1/1 200	✓	✓	✓	✓
	3 drawers GN 1/1 150	✓	✓	✓	✓

PH* - Cooling counter PZ*** - Freezing counter



GASTRONORM GN1/1 COOLING AND FREEZING COUNTERS



A1



A2



A3



A4



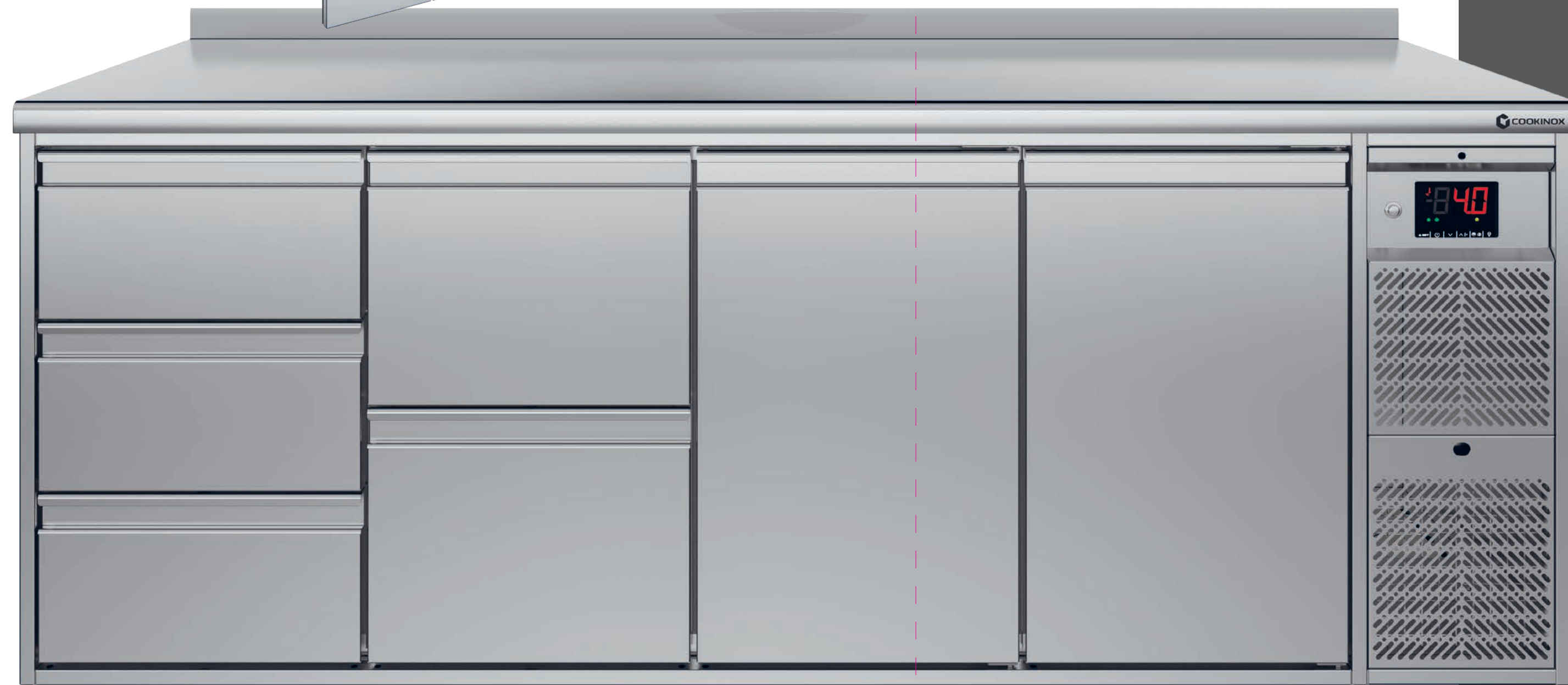
B1



B2



B3



A

REFRIGERATING COUNTERS

- A1 PH1 / PZ1
- A2 PH2 / PZ2
- A3 PH3 / PZ3
- A4 PH4 / PZ4

B

DOOR AND DRAWER MODULES

- B1 Door module
- B2 Double drawer set
- B3 Triple drawer set



GASKETS

Magnetic gasket made of silicon rubber, replacement without the need for tools.



STAINLESS STEEL EVAPORATOR

Evaporator for dynamic cooling made entirely of AISI316 stainless steel and encased in a AISI304 housing. Defrosting with hot gas and high energy efficiency.



INSTALLATION COMPARTMENT

Plug-in version with integrated refrigerating system or prepared to mount on central refrigerating system. Maintenance-friendly design in the case of plug-in version, with compressor withdrawable for maintenance purposes. As an option, air intake may be fitted with a filter to prevent build-up of dust or grease in the aggregate unit.

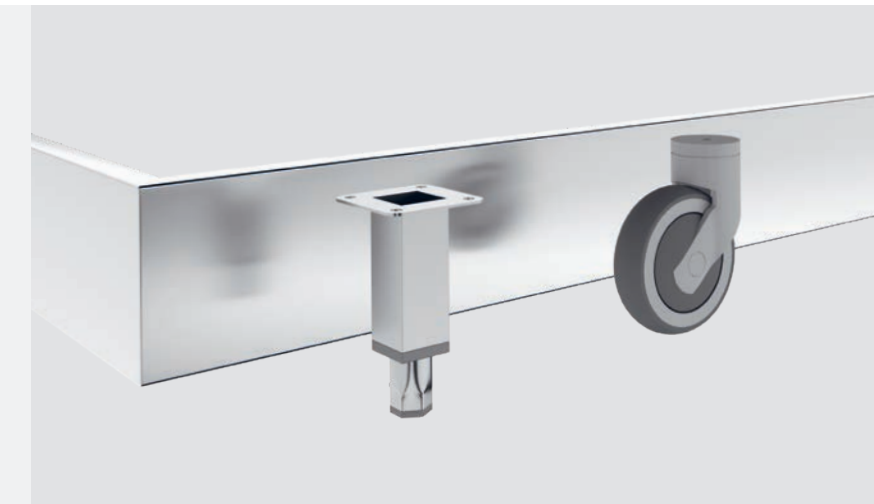


HYGIENIC INTERIOR

The Refrigerating tables are made in hygienic grade with fully rounded edges (R=10mm).



VARIABE CONFIGURATIONS OF DOORS AND DRAWER SETS



BASE

Choice of mounting on stainless steel base frame or concrete base, adjustable legs or castors.